

# MOUNT RONAN

## WHITE SUFFOLKS & MATERNALS

*Specialising in the breeding of elite quality prime rams*

*“The profitability of our producers’ prime lamb enterprises is the key to the future of Mount Ronan”*

- Nearly 50 years of performance breeding at Mount Ronan
- The “grunt” gene remains King at Mount Ronan...that’s the Mount Ronan trademark
- The average Mount Ronan sheep is **twice as muscular** as the average sheep on Lambplan
- Mount Ronan’s focus is the identification of those truly proven-elite ewes in the flock with outstanding production genes

**Contact:** Guy Bowen (08)96411483 [mountronan@bordnet.com.au](mailto:mountronan@bordnet.com.au) [www.mountronan.com.au](http://www.mountronan.com.au)

## SEMEN SIRES AVAILABLE FOR THE 2016 MATING

 = SGA trait leader

### Mount Ronan 100337

BWT	WWT	PWWT	PFAT	PEMD	PWEC	Carcase Plus	Lamb 2020	LMY	IMF	SHEARF5
0.53	9.7	15.4	-0.2	2.86	-31.24	209.9	116.0	-0.3	0.43	-2.4



Why not go back to the power source? .....The ultimate curve-bending sire in the Mount Ronan production breeding program. A powerful ram with an “unkillable” constitution. The real game changer for Mount Ronan.

This ram has been evaluated in the Sheep CRC Genomics Program, and his traits have very high accuracies.

Mount Ronan 100337 has a placid temperament, but is a wonderful worker. He carries the pure poll gene and has wonderful performance coupled with outstanding eating quality genetics. He has positive lambing ease despite his higher birthweight and has a slick body conformation. He is hypo free.

Click for pedigree: [Pedigree MOUNT RONAN-100337](#)

**Limited semen available: 20 dose packages @ \$1200**

**Mount Ronan 110583**

BWT	WWT	PWWT	PFAT	PEMD	PWEC	Carcase Plus	Lamb 2020	LMY	IMF	SHEARF5
0.30	10.53	17.43	-0.18	3.56	-30.68	226.81	118.30	-0.04	0.17	-1.4



Sold as a 12 week old lamb for \$3,000 to Cherylton Farms at Kojonup, WA. A son of Mount Ronan 100337. Inherits his sire’s amazing constitutional strength, and his performance continues to improve with more progeny and better linkages. A true super sire.

Mount Ronan 110583 demonstrates outstanding evenness of genetic expression in his progeny. They are all well muscled, well balanced production animals, with the right combination of growth, leanness and muscling.

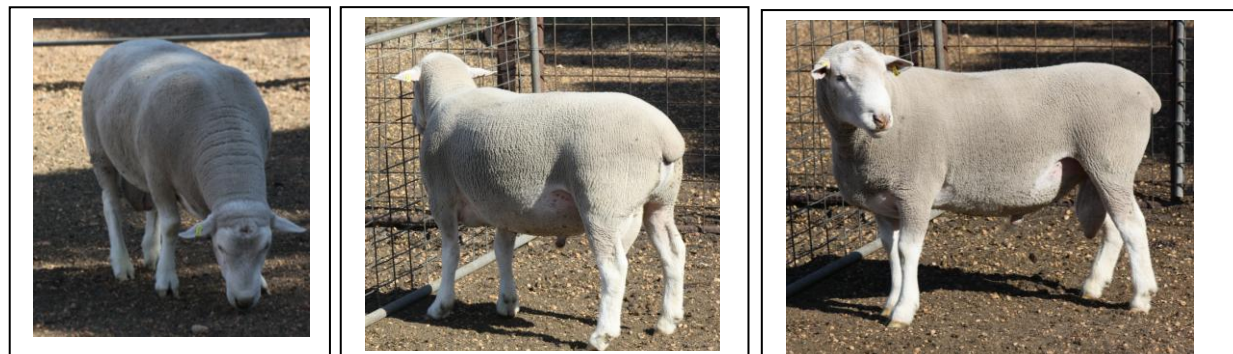
This ram is hypo free and has outstanding eating quality genetics. Ideal for mating to daughters of Pollambi 110451.

Click for pedigree: [Pedigree MOUNT RONAN-110583](#)

**Semen available: \$50 per dose (minimum of 30 dose packages)**

**Mount Ronan 130074**

BWT	WWT	PWWT	PFAT	PEMD	PWEC	Carcase Plus	Lamb 2020
0.36	8.82	14.44	-0.59	2.14	-	197.90	113.15



A ram which has had limited use in the White Suffolk program until 2015. Figures are sure to strengthen markedly with wider use and better linkage.

Mount Ronan 130074 is the most like his sire of all the sons of Mount Ronan 100337. His 2015 drop lambs look fantastic. A super quiet sire with a wonderful work ethic. This ram is extremely smoothly constructed and correct and is perfectly balanced.

Mount Ronan 130074 is hypo free, and genomic results are pending.

Click for pedigree: [Pedigree MOUNT RONAN-130074](#)

**Semen available: \$40 per dose (minimum of 30 dose packages)**

**Mount Ronan 140047**

BWT	WWT	PWWT	PFAT	PEMD	PWEC	Carcase Plus	Lamb 2020
0.19	8.90	13.89	0.27	4.2	-	215.9	115.6



An exceptional twin son of Farrer 110155, out of an outstanding Mount Ronan ewe which is a half sister of Mount Ronan 100337. This young ram has already produced sensational progeny with wonderful length, thickness and depth of muscling, particularly in the hind quarter.

Mount Ronan 140047 has a quiet temperament as well, with magnificent correctness, balance, smoothness and fleshing.

Mount Ronan 140047 is hypo free, and genomic results are pending.

Click for pedigree: [Pedigree MOUNT RONAN-140047](#)

**Semen available: \$40 per dose (minimum of 30 dose packages)**

**Mount Ronan 140063**

BWT	WWT	PWWT	PFAT	PEMD	PWEC	Carcase Plus	Lamb 2020
0.38	10.97	18.09	-0.90	1.87	-	213.9	115.3



A triplet son of Woolumbool 127814, out of an outstanding half sister of Mount Ronan 100337. This ram is a very classy, real White Suffolk type, with excellent balance, smoothness and fleshing.

Mount Ronan140063 was used in the Mount Ronan flock for the 2015 lambing with very good results. Mount Ronan 140063 is hypo free, and genomic results are pending.

Click for pedigree: [Pedigree MOUNT RONAN-140063](#)

**Semen available: \$40 per dose (minimum of 30 dose packages)**